

### Where to get more help

To ensure you get the best out of your HX-2+, please register your device. You can also register for our regular Hema University webinars or access our online help guides at [kb.hemamaps.com](http://kb.hemamaps.com)



### How to contact us

#### Hardware/Troubleshooting support:

Please contact Directed Electronics Australia  
Ph: +61 03 8331 4800  
Email: [service@directed.com.au](mailto:service@directed.com.au)

#### Maps/Software support:

Please contact Hema Maps  
Ph: +61 07 3340 0000  
Email: [info@hemamaps.com](mailto:info@hemamaps.com)  
Web: [hemamaps.com/support](http://hemamaps.com/support)



Hema Maps Pty Ltd. [hema.com.au](http://hema.com.au)

Hema®, Hema Maps® and Map Patrol® are registered trademarks of Hema Maps Pty Ltd. HERE® is a trademark of Here Technologies LLC. © 2023 Hema Maps Pty Ltd.

© Hema and Hema Maps are used under licence by Directed Electronics.



All Images, Information and Content are Copyright © 2023 Directed Electronics Australia Pty Ltd. All Rights Reserved.



# HX-2+ GPS Navigator

Prepared to explore.



## Quick Start Guide

[hema.com.au](http://hema.com.au)



HEMA  
PROTECT

3-YEAR  
WARRANTY

# Contents

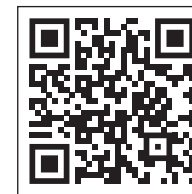
<b>Welcome to your new Hema Maps HX-2+ GPS Navigator .....</b>	<b>3</b>
<b>Getting to know your HX-2+.....</b>	<b>4</b>
<b>Switching the HX-2+ on and off.....</b>	<b>5</b>
<b>The main screen .....</b>	<b>6</b>
<b>Hema Nav (turn-by-turn) .....</b>	<b>7</b>
<b>Hema Nav (Track Guidance) .....</b>	<b>8</b>
<b>4WD Maps .....</b>	<b>10</b>
<b>The Main Page &amp; Flipside Page Main Page .....</b>	<b>12</b>
<b>Wireless Reversing Camera.....</b>	<b>13</b>
<b>GPS Screens and Location Services .....</b>	<b>14</b>
<b>Home Panel.....</b>	<b>15</b>
<b>Hema Update Manager .....</b>	<b>16</b>
<b>All Apps .....</b>	<b>17</b>
<b>HX-2+ Settings .....</b>	<b>18</b>
<b>System/Device Settings .....</b>	<b>19</b>
<b>HX-2+ Specifications .....</b>	<b>20</b>
<b>Warranty terms and conditions.....</b>	<b>21</b>
<b>Where to get more help.....</b>	<b>24</b>

## Limitations of Hema Maps liability

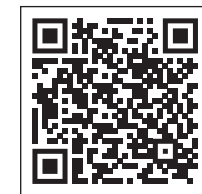
Under no circumstances will Hema Maps be liable in any way for any content, including but not limited to, the loss of content, any errors or omissions in any content, or any loss or damage of any kind incurred in connection with use of or exposure to any content posted, emailed, accessed, transmitted or otherwise made available via Hema Maps.

Hema Maps liability for damages, especially for breach of duty or obligation, delay in performance, non-performance or malperformance shall be precluded, except when these are due to negligent breaches of any significant contractual duty or obligation on the part of Hema Maps. Any liability for negligence is limited to direct losses, usually and typically foreseeable in such a case. Should the claim for damages be based on wilful or grossly negligent breach of contractual duty or obligation on the part of Hema Maps, the preclusion and limitation of liability mentioned in the preceding sentences will not apply. The preceding preclusion and limitation of liability will also not apply to claims for damages arising out of loss of life, bodily injury or health impacts for which Hema Maps may be liable, or for non-contractual liability.

Some states and countries do not allow the exclusion or limitation of incidental or consequential damages, so the above limitation or exclusion may not apply to you. Additionally, this provision is not intended to limit Hema Maps' liability in the event of Hema Maps' wilful or intentional misconduct.



Hema Maps  
Disclaimer



HERE End User Terms  
and Privacy Policy

available" basis. Hema Maps makes no warranty that the Hema Maps products and services will meet your requirements or that use of the Hema Maps products and services will be uninterrupted, timely, secure or error-free nor does Hema Maps make any warranty as to the accuracy or reliability of any information obtained through Hema Maps (including third-party content), that any defects in Hema Maps products and services will be corrected or that Hema Maps products or services will be compatible with any other specific hardware or service. Further, Hema Maps does not warrant that Hema Maps products or services or Hema Maps servers will provide you with data and content that is free of viruses or other harmful components. Hema Maps also assumes no responsibility for and shall not be liable for any damage caused by viruses that may infect your Hema Maps product, computer software or other hardware.

In the event of any loss, damage or injury, you will not look to Hema Maps to compensate you or anyone else. You release and waive for yourself and your insurer all subrogation and other rights to recover against Hema Maps arising as a result of the payment of any claim for loss, damage or injury. Hema Maps equipment and services do not cause and cannot eliminate occurrences of certain events and Hema Maps makes no guarantee or warranty, including any implied warranty of merchantability or fitness for a particular purpose or that Hema Maps equipment and services provided will detect or avert such incidents or their consequences. Hema Maps does not undertake any risk that you or property, or the person or property of others, may be subject to injury or loss if such an event occurs. The allocation of such risks remains with you, not Hema Maps.

Other than the above product warranty for Hema Maps products, its suppliers disclaim all warranties of any kind, whether express, implied or statutory, regarding Hema Maps products and services, including any implied warranty of title, merchantability, fitness for a particular purpose or non-infringement of third-party rights. Because some jurisdictions do not permit the exclusion of implied warranties, the last sentence of this section may not apply to you. Hema Maps hereby further expressly disclaims all liability for claims for service failures that are due to normal product wear, product misuse, abuse, product modification, improper product selection or your noncompliance with all applicable federal, state or local laws.

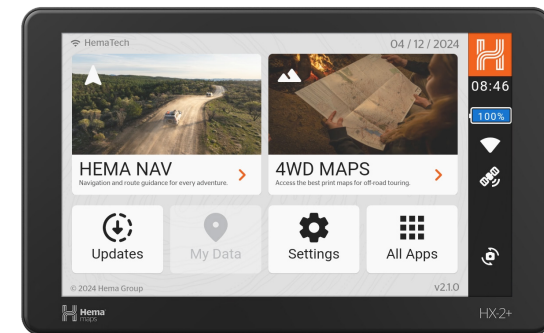
This warranty and warranty disclaimer give you specific legal rights, and you may have other rights that vary by state, province or country. Other than as permitted by law, Hema Maps does not exclude, limit or suspend other rights you have, including those that may arise from the nonconformity of a sales contract. For a full understanding of your rights, you should consult the laws of your state, province or country. For our Australian customers: please note that this warranty is in addition to any statutory rights in Australia in relation to your goods which, pursuant to the Australian Consumer Law, cannot be excluded.

## Welcome to your new Hema Maps HX-2+ GPS Navigator

This guide will help you get started with your new HX-2+ so you can get out and explore.

### Box includes:

Hema Maps HX-2+ GPS Navigator



Suction Mount



Hard Carry Case



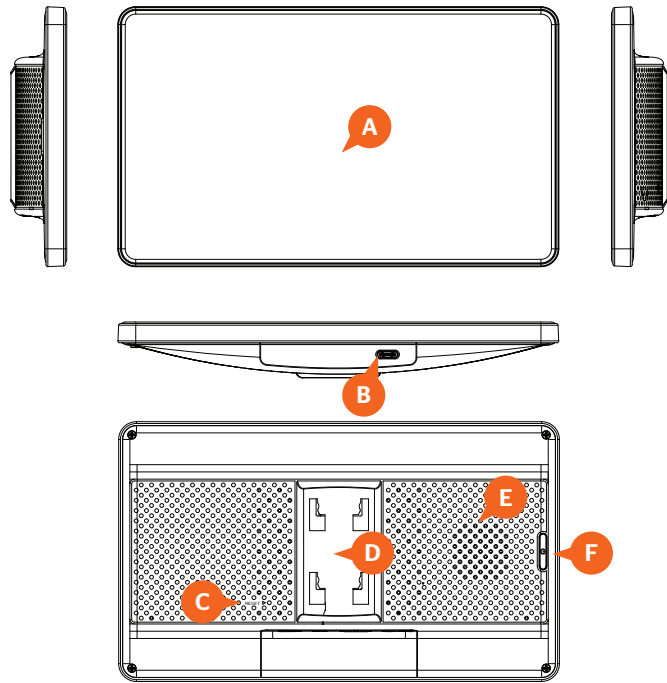
USB-A to USB-C Heavy Duty Cable



12V/24V 2A Car Adaptor



## Getting to know your HX-2+



- A** Touchscreen
- B** Charging port (USB-C)
- C** Reset button
- D** Mounting slot
- E** Speaker
- F** Power button

**Important:** Please fully charge your HX-2+'s battery as soon as possible. While charging, do not leave the HX-2+ lying or mounted on your dashboard where it will be exposed to extreme temperature conditions.

## Warranty terms and conditions

Our goods come with guarantees that cannot be excluded under the Australian Consumer Law. You are entitled to a replacement or refund for a major failure and compensation for any other reasonably foreseeable loss or damage. You are also entitled to have the goods repaired or replaced if the goods fail to be of acceptable quality and the failure does not amount to a major failure.

This warranty is provided in addition to your rights under the Australian Consumer Law. Directed Electronics Australia Pty Ltd (Directed Electronics) warrants that this product is free from defects in material and workmanship for a period of 3 years from the date of purchase or for the period stated on the packaging. This warranty is only valid where you have used the product in accordance with any recommendations or instructions provided by Directed Electronics.

This warranty excludes defects resulting from alterations of the product, accident, misuse, abuse or neglect. To claim the warranty, you must return the product to the retailer from which it was purchased or if that retailer is part of a national network, a store within that chain, along with satisfactory proof of purchase. The retailer will then return the goods to Directed Electronics.

Directed Electronics will repair, replace or refurbish the product at its discretion. The retailer will contact you when the product is ready for collection. All costs involved in claiming this warranty, including the cost of the retailer sending the product to Directed Electronics, will be borne by you.

### Indemnity

You agree to defend, indemnify and hold harmless Hema Maps and its subsidiaries and affiliates from and against any and all claims, proceedings, injuries, liabilities, losses, costs and expenses (including reasonable legal fees), including but not limited to claims alleging negligence, invasion of privacy, copyright infringement and/or trademark infringement against Hema Maps and its subsidiaries and affiliates, relating to or arising out of your breach of any provision of these terms, your misuse of Hema Maps products or its services, or your unauthorised modification or alteration of products or software.

### Warranty and warranty disclaimer

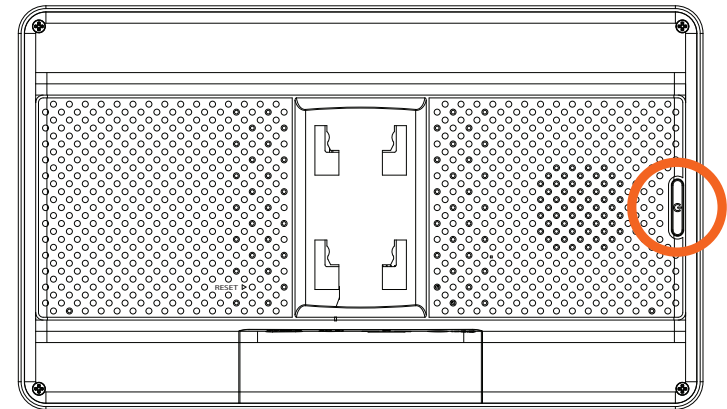
Hema Maps has a limited warranty on whereby Hema Maps warrants to you and only to you that this Hema Maps product will be free from defects in materials and workmanship for 3 years from the date of your purchase (unless a longer warranty period is required by law). The specifics of this Hema Maps limited warranty are covered in this manual.

To the extent possible under governing law, other than the above product warranty for the Hema Maps product, you understand and agree that the Hema Maps products and services are provided on an "as is" and "as

## HX-2+ Specifications

<b>CPU</b>	Allwinner A1333
<b>Operating System</b>	Android 10
<b>Display</b>	7" 1024 x 600 IPS
<b>Touchscreen</b>	Capacitive Touchscreen, 5 points touch
<b>RAM</b>	4GB
<b>Internal Memory</b>	64GB
<b>Battery</b>	850mAH
<b>Battery Life</b>	Up to 2 hours, depending on settings
<b>Physical Buttons</b>	Power
<b>Wireless</b>	802.11 a/b/g/n/ac
<b>Other Communications</b>	Bluetooth® Ver. 5.2
<b>Operating Conditions</b>	-10°C to 60°C* (excluding battery charging)
<b>GNSS</b>	GPS + GLONASS + Galileo + QZSS
<b>Audio</b>	8Ω, 1W
<b>USB Port</b>	USB-C x 1
<b>Software Inclusions</b>	On-Road Navigation – powered by HERE Technologies Off-Road Hema Navigation – includes Hema Maps Explorer Map Adventure Maps – access to Hema Maps Print Maps (Raster) HX-2+ Application Updater Setting App Camera App
<b>Accessories</b>	Windscreen Mount 12V/24V 2A Car Adaptor USB-A to USB-C Lead Hard Carry Case
<b>Dimensions</b>	182.63mm x 107.63mm x 23.1mm
<b>Warranty</b>	3 years
<b>Optional Accessories</b>	Wi-Fi Reversing Camera Sun Visor

## Switching the HX-2+ on and off



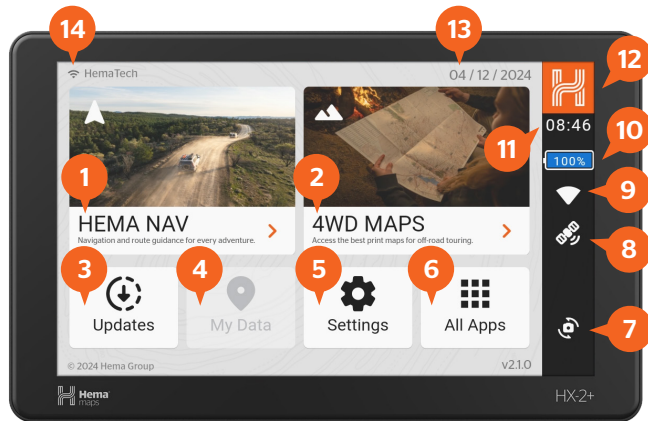
**Switching on:** Press the power button for 2 seconds and release. The HX-2+ will display an animation followed by the main screen.

**Switching off:** The HX-2+ can be completely switched off or put into Sleep Mode. Pressing the power button for 2 seconds while the HX-2+ is switched on will display a confirmation page asking you to “Power off” or “Restart”. Select “Power off” to completely switch off the HX-2+.

**Registering your HX-2+:** The first time you switch on your HX-2+ you will be guided through the setup process by a Setup Wizard. This will help connect your HX-2+ to the internet and allow you to sign in. To access a three-year subscription, register your device.

**Important:** The HX-2+ needs connected GPS reception to set the correct date and time to register.

## The main screen

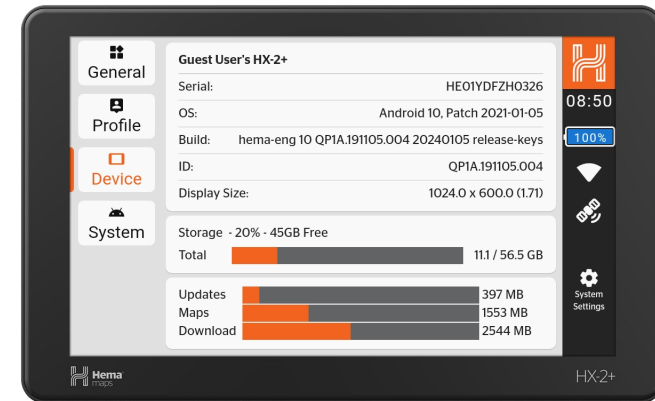


- |   |                                     |
|---|-------------------------------------|
| ① HEMA NAV – Navigation and route guidance for every adventure. | ⑦ Reversing camera (when connected) |
| ② 4WD MAPS – Access the best print maps for offroad touring.    | ⑧ Satellite status                  |
| ③ Updates   | ⑨ Wi-Fi indicator                   |
| ④ My Data   | ⑩ Battery indicator                 |
| ⑤ Settings  | ⑪ Current time                      |
| ⑥ All Apps  | ⑫ “H” button (back button)          |
|   | ⑬ Current date                      |
|   | ⑭ Wi-Fi network in use              |

\*Optional reverse camera sold separately

**Important:** The HX-2+ features two different navigation options allowing the user to customise their mapping experience. Hema Nav provides two different experiences – powerful turn-by-turn navigation (ideal for urban driving) and advanced track guidance (designed for remote, offroad exploration). 4WD Maps (separate subscription required) from the Memory Map© team provides access to Hema’s printed map catalogue and other well-known map print providers.

## System/Device Settings



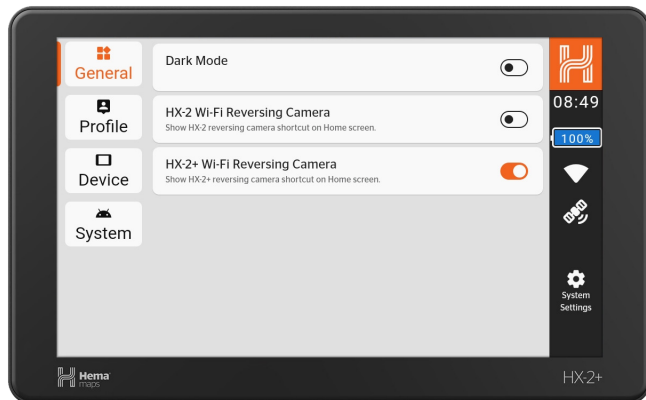
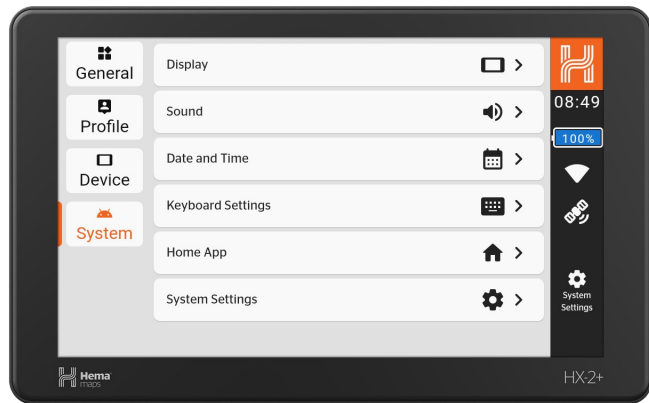
The HX-2+ provides a number of options for the user to customise their experience. Activating day/night mode and adjusting sound volume are a few much sought-after features.

The user can also view sign-in status, available storage and manage some home screen icons such as reversing camera quick select.

### From the Device Settings panel you can:

- Set the date and time
- Control brightness and volume
- Configure power settings
- Set the flight mode
- Connect to Wi-Fi networks
- Connect to Bluetooth devices
- Adjust screen Time-Out settings
- Check for system updates
- Show device registration and serial number

## HX-2+ Settings



## Hema Nav (turn-by-turn)

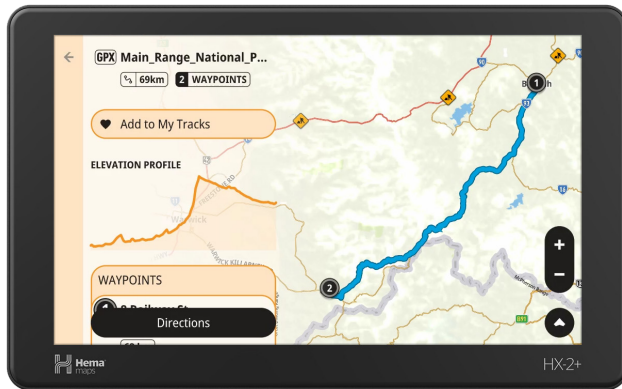


The Hema Nav integrates the best of On-Road turn-by-turn navigation and Off-Road route guidance using Hema's award-winning Explorer Map.

### The Hema Nav turn-by-turn provides:

- Detailed turn-by-turn navigation
- Offroad track guidance
- Voice and display guidance
- Multi-route options
- Safety camera alerts
- Integrated POI search
- Speed, school and navigation alerts
- Location/street address search
- Web location search (online only)
- Track recording
- Trip/location status bar
- Live traffic alerts (if connected to Wi-Fi)
- Hema Maps POIs
- Day and night mode

## Hema Nav (Track Guidance)



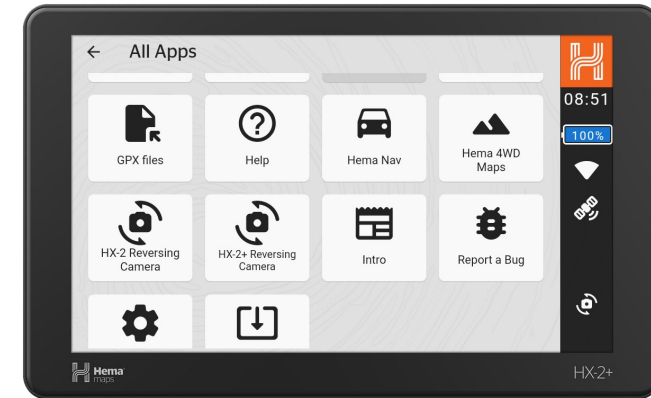
Hema Nav On-Road turn-by-turn brings you to the start of your offroad adventure. Hema Nav Track Guidance seamlessly transitions the HX-2+ into a powerful remote navigator for every adventure.

Off-Road, the award-winning 3D Hema Explorer Map – with its unparalleled detail and styling – is built to aid users to navigate in remote locations.

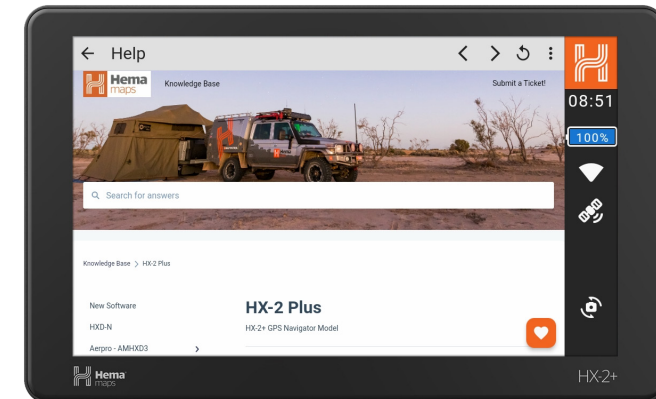
### The Hema Nav Off-Road Track Guidance provides:

- 3D Hema Explorer Map
- 500,000+ Points of Interest (including Hema Maps-verified POIs and 4WD tracks)
- Search routes, tracks, POIs and favourite locations
- Full track recording capability
- Navigate to location
- Follow pre-existing featured tracks
- Tilt /rotate map
- Map centre, map lock and zoom

## All Apps



All Apps provides access to additional features and functions for the HX-2+ including reversing camera and help guides.

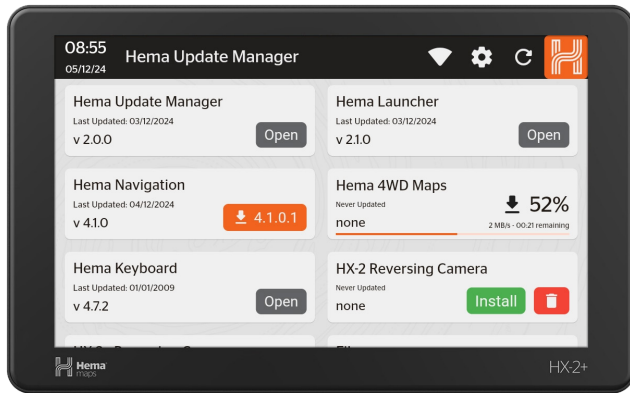


### Help

For support in using your HX-2+, accessing our FAQs or viewing our detailed user manual, connect your device to Wi-Fi and browse our Knowledge Base. For technical support, click the Submit a Ticket button and one of our customer service team members will get in contact with you.



## Hema Update Manager



### Within the Hema Update Manager:

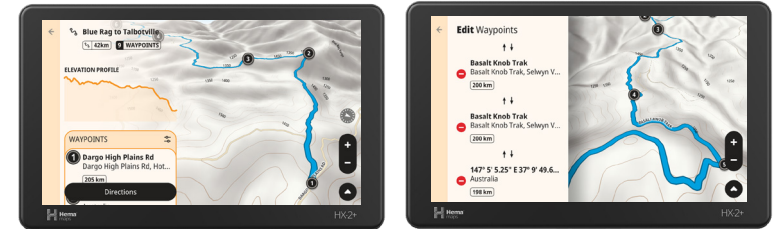
All updates are completed over a Wi-Fi connection. These files may be large, especially mapping file updates. Please ensure you have a stable internet connection and the HX-2+ is plugged in to power before commencing any updates.

When connected to Wi-Fi, the HX-2+ will show any available updates for your device. These can include system, software or mapping updates.

Please complete one update at a time by clicking on the orange button with the download arrow. The HX-2+ provides a status bar to monitor the progress of your download.

Once the download has finished, you will be prompted to install the update. When completed choose either open to run the new update or done.

## Hema Nav (Track Guidance)



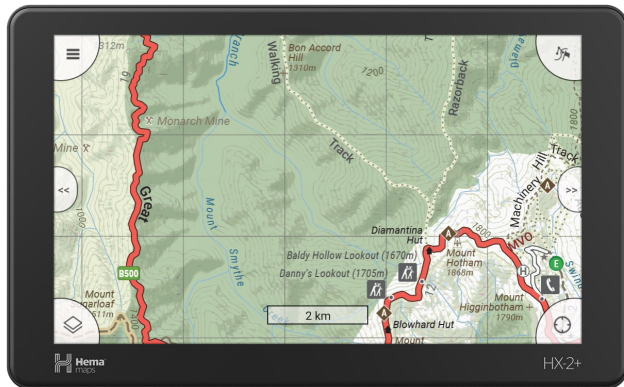
HX-2+ Off-Road Track Guidance allows you to build your own adventure. Add created waypoints, campsites or POIs to customise your journey offroad.

## My Data



HX-2+ Track Guidance Library allows you to easily store and organise your data. View and share your track bucket list, import or export GPX files and see a bird's-eye view of your adventures.

## 4WD Maps



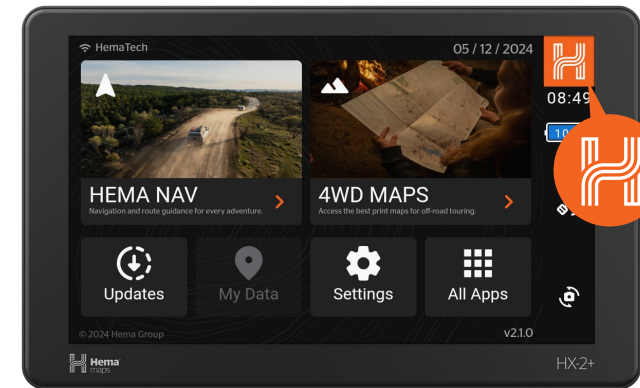
Hema 4WD Maps powered by Memory Map© (subscription required) provides access to Hema's highly detailed digital print maps.

The static nature of print maps allows explorers to retain context for local surroundings plus detailed navigation/location information for these remote areas.

### The HX-2+ 4WD Maps account provides:

- Hema Maps Print Maps including the Iconic Maps series, Regional/Remote Maps, State Maps, Australia-wide Maps
- Access to the Memory Map Digital Map Store
- Integrated maps at view function
- Full track recording capability
- Route to location
- Map centre, map lock and zoom
- Detailed track and navigation statistics

## Home Panel



**Pressing** the Navigation button allows you to return to the previous screen you were on. If you hold the H down for 2 seconds, it will take you back to the Home Screen.



**My Data** provides one location to access and manage waypoints and stored track files.



### Device Settings

Tapping the Settings button will allow you to make system changes (e.g. set date and time), manage Bluetooth and Wi-Fi connectivity, manage power mode, relaunch the Setup Wizard or display the About Screen. System Settings: access all the HX-2+ Operating System settings.



### Updates

To keep your HX-2+ running at its best check for updates regularly. When you click on the Updates icon, the Hema Update Manager opens. This page checks and displays any system updates that are available for you HX-2+.

## GPS Screens and Location Services



The HX-2+ has a number of features which allow you to validate your current GPS signal(s) and detail your current location.

Satellite status provides the status and details of the satellites that the HX-2+ has a fix on.

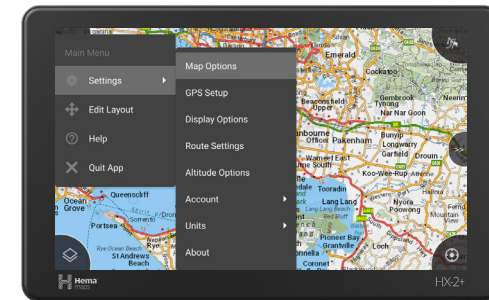
Satellite connection requires a line of sight to the sky.

Location accuracy may be reduced by heavy tree foliage, terrain obstruction (e.g. tunnels or deep valleys) and heavy storm clouds.

To reconnect, try moving your position monitor and satellite status.

## 4WD Maps

Signing in (subscription required)

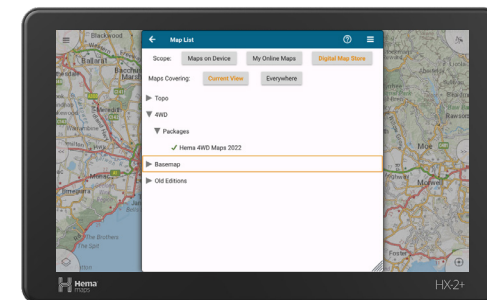


To start off, you will need to create a new account or sign in with an existing Memory Map© account.

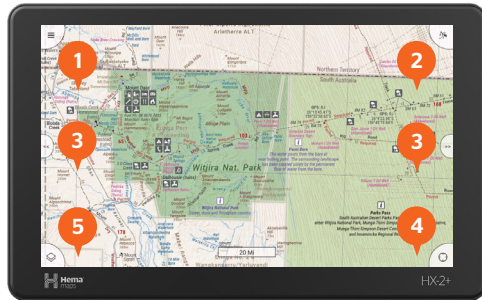
Tap on the Main Menu icon (three horizontal lines on the top right of the screen) and then "Account". Follow the Account sign-in process to activate.

## Downloading the Hema 4WD Maps Package 2022 or Additional Maps

Once logged in, head to the "Digital Map Store". Tap the Map List icon (bottom left of the screen) and scroll through the list of maps. Please be aware of the download size. For example, the Hema 4WD Maps Package 2022 is approximately 2.8GB, which may take around 15 minutes on a broadband connection.



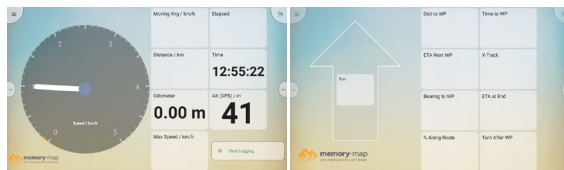
## The Main Page & Flipside Page Main Page



The Main page displays the current map, with your position shown by an indicator in the centre of the screen. Functions include:

- ① Main Menu – Settings, Layout and Account Registration
- ② Overlays – Route, Map Marks (Waypoints), Track Recording (Only in 4WD Maps), Import GPX File
- ③ Moves to Next Flipside Page
- ④ Location Lock
- ⑤ Map Layers/Access to the Memory Map Digital Map Store

## Flip Screens



The Flipside page has multiple sections to manage your statistics and contains an array of data fields showing various GPS parameters: such as average speeds, altitude, etc. The content of these fields can be customised to suit your requirement, although the default layout and values are suitable for most people.

## Wireless Reversing Camera

Turn your GPS into a rear-vision monitor by adding the HX-2+ Wireless Reversing Camera (sold separately).

Compatible with the Hema HX-2+ GPS Navigator, the HX-2+ camera ensures safe reversing and parking to protect you, your family and the community. Full HD 1080p image, IR LEDs for night vision up to 5m and built-in Wi-Fi that is a breeze to set up.

- Turn on/off grid lines
- Rotate image
- Installation required to connect to power supply
- Quick select camera activation from the main screen
- Suitable for all vehicles, caravans and trailers

